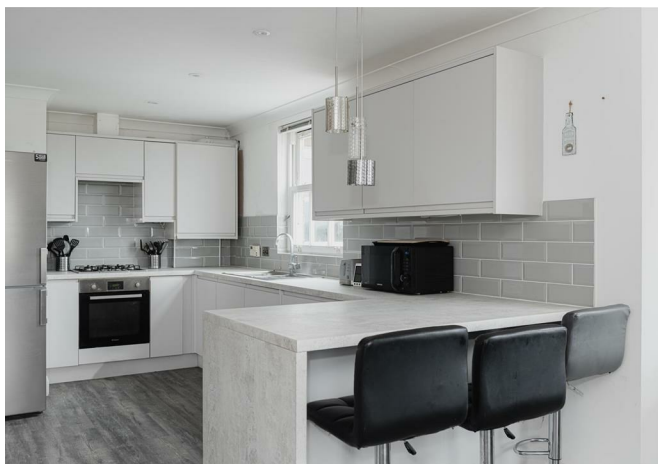




Coulston Road, Caterham  
£325,000





“

Situated on a popular residential road,  
this spacious and bright apartment is  
different to most and will stun you with  
its open and airy feel.

”



Set within a stones throw of Coulsdon train station, this modern two bedroom apartment has everything you could need within walking distance to all your necessary amenities. Situated in Caterham on the Hill, a short walk from the high street with its coffee shops, cafes, and popular pubs.

As you enter the apartment, you are welcomed by a generous sized hallway, perfect to hang your coats and pop down your shoes.

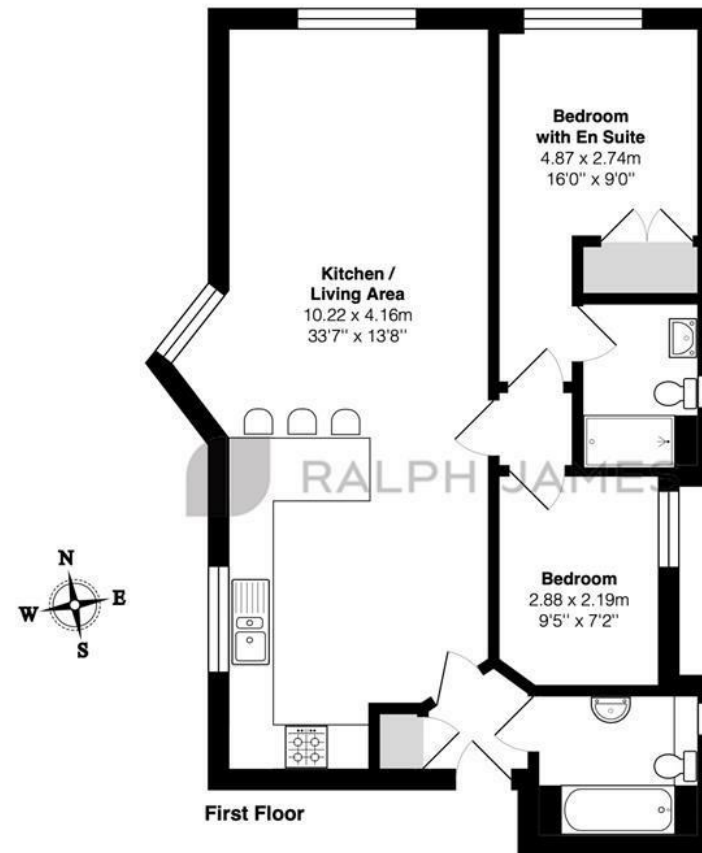
Walking into the open plan kitchen/dining/living room the space is flooded with light. Large windows offer great views of the surrounding towns and countryside. The stylish kitchen is fully fitted with integrated appliances and is designed with white gloss cupboards and sleek work surfaces allowing plenty of space to prepare meals. It's social layout is ideal for hosting guests, making it easy to interact with them whilst you cook and the L shape bar gives you a place to sit with your coffee in the mornings.

The spacious double bedrooms have been decorated with light colours so you're able to add your own personal stamp with little fuss. Off the hallway is the modern main bathroom with a white three-piece suite and the master bedroom comes with a walk in shower en-suite.



## Need to know

- Modern 2 bedroom apartment
- Sleek bathroom & en-suite
- Open plan living space, perfect for entertaining
- Close to train station (London Zone 6)
- Allocated Parking space
- Service charge - £60pcm
- Lease - 984 remaining



Cedar Court, Coulsdon Road, Caterham

Total Area: 67.3 m<sup>2</sup> ... 724 ft<sup>2</sup>

FOR ILLUSTRATIVE PURPOSES ONLY.

Whilst every attempt has been made to ensure the accuracy of the floor plan shown, all measurements, positioning, fixtures, features, fittings and any other data shown are an approximate interpretation for illustrative purposes only and are not to scale.

No responsibility is taken for any error, omission, miss-statement or use of data shown.

The above statement applies to both 'Still Moving London LTD' and the Company or individual displaying this floor plan.

Unauthorised reproduction prohibited.

© Still Moving London LTD (www.stillmoving.london)



## Interested?

Robin Watson  
robin@ralphjames.co.uk  
01737 765 555

ralphjames.co.uk